

Windham High School: 2017 NH YRBS Preliminary Report

Other Health Risks: Time Trends, By Sex, and By Grade

Windham High School is in the Greater Derry Public Health Region and is served by the Bridges crisis center.

PRELIMINARY RESULTS (v1.2)

This report contains preliminary results for 2017. All 2017 results are subject to change when the CDC returns the final dataset to the State, expected in early 2018. Please use caution when referring to and using these preliminary data until the final data set is received from the CDC. This report contains results for all questions asked on any YRBS survey since 2007. Note, access to regional level results were first made available in 2015 and are not available prior to that year.

State and Regional Estimates

State and Regional estimates are calculated from a random sample developed using scientific survey methods. These methods ensure the respondents are representative of students in the region in the State. These estimates account for student, classroom, school, and regional factors. The random sample is not designed to provide school level estimates.

School Level Estimates

The 2017 survey response rate at Windham High School was 87% where 786 of 901 students took the survey. **School level estimates are unweighted and based on a convenience sample of students in attendance, and not opting out of participation in the YRBS, on a given date and time during the school year.** However, because participation was relatively high the school estimates may still be representative of the entire school population. Results could be less representative if specific classrooms or classroom types were not included in the survey. We have attempted to estimate how many students in the school actually fall within each risk category. We did this by scaling up the students responding in the survey using school enrollment data.

Estimates number and percentage were suppressed (*) if the underlying sample size was <60 respondents and/or cell sizes are between 1 and 5.

Help and assistance

Questions on this report (NH YRBS Community level preliminary report)

Health Statistics and Data Management

Division of Public Health Services - State of NH

NH.YouthRiskBehaviorSurvey@dhhs.nh.gov; (603) 271-4988;

Additional technical assistance for YRBS related information

NH Center for Excellence

nhcenterforexcellence@jsi.com; (603) 573-3300

<http://nhcenterforexcellence.org/center-services/request-ta/>

Change Log

v1.2: Indicators revised to display by CDC question direction as greater risk; and, revised methodology to more accurately display number of students projected based on school enrollment data.

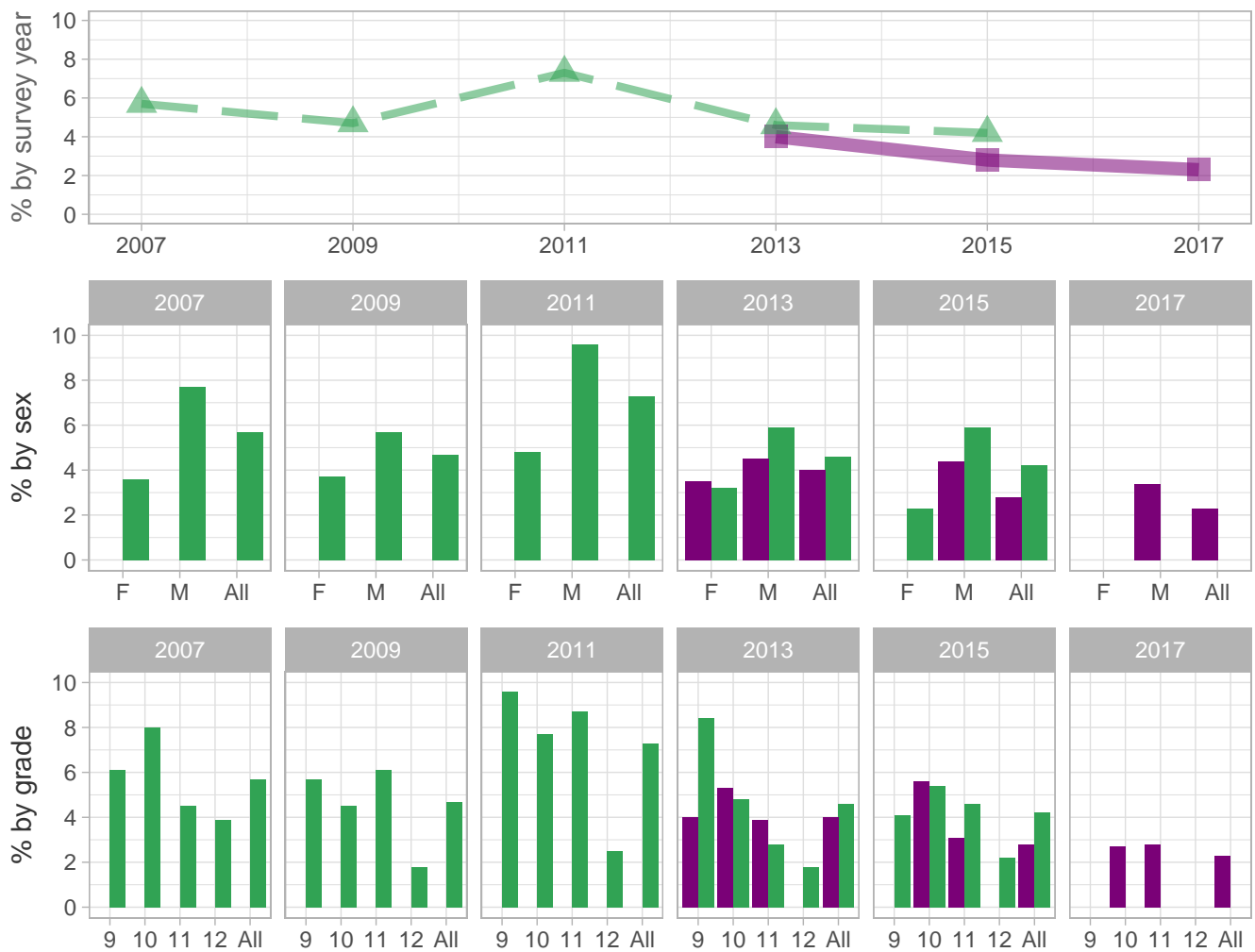
v1.1: School estimates corrected to include CDC sample - report sent 8/31-9/1

v1.0: Initial report sent 8/29

 School
  Region
  NH

Other Health Risks

Percent of students who had grades mostly D's or F's during the past 12 months



School-level by Sex and Grade

		2009(pct)	2011(pct)	2013(pct)	2015(pct)	2017(pct)	2017(n)
By sex	F	-	*	3.5	*	*	*
	M	-	*	4.5	4.4	3.4	16
By grade	9th	-	*	4.0	*	*	*
	10th	-	*	5.3	5.6	2.7	7
	11th	-	-	3.9	3.1	2.8	7
	12th	-	-	*	*	*	*
All	All	-	*	4.0	2.8	2.3	21

How the question was actually asked: During the past 12 months, how would you describe your grades in school?; a: Mostly A's ; b: Mostly B's ; c: Mostly C's ; d: Mostly D's ; e: Mostly F's ; f: None of these grades ; g: Not sure;

Percent (pct): numerator: de; denominator: abcdefg; qid: 8; 2007q8; 2009q8; 2011q8; 2013q8; 2015q8; 2017q8;

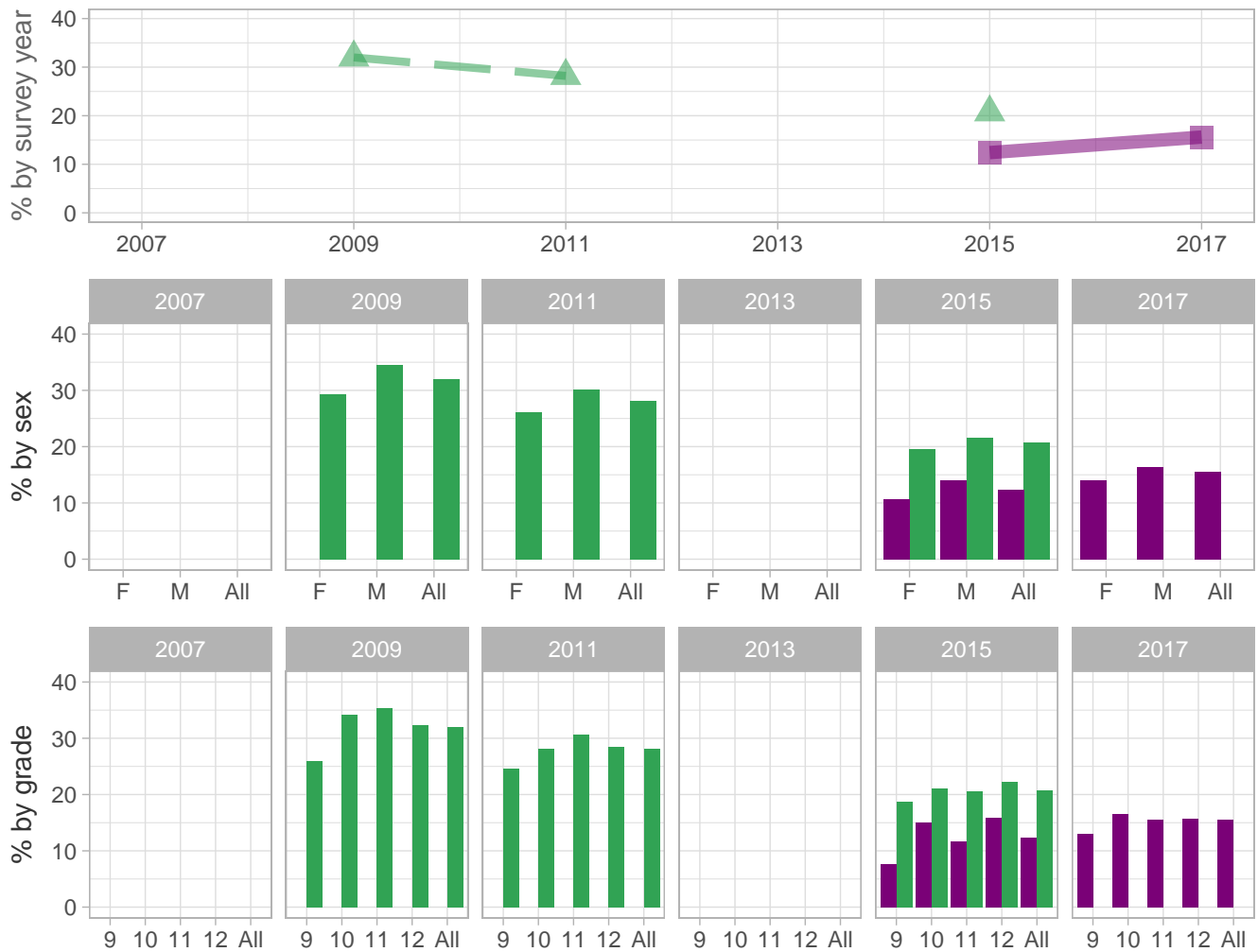
Number (n): Estimated number of students projected based on school enrollment data.

-: Data not available; *: Suppressed due to small cell sizes.

 School
  Region
  NH

Other Health Risks

Percent of students who did not have a check-up or physical exam during the past 12 months



School-level by Sex and Grade

		2009(pct)	2011(pct)	2013(pct)	2015(pct)	2017(pct)	2017(n)
By sex	F	-	*	-	10.6	14.1	60
	M	-	*	-	14.0	16.4	77
By grade	9th	-	*	-	7.6	13.1	35
	10th	-	*	-	15.0	16.6	37
	11th	-	-	-	11.7	15.5	34
	12th	-	-	-	15.8	15.7	30
All	All	-	*	-	12.4	15.6	141

How the question was actually asked: When was the last time you saw a doctor or nurse for a check-up or physical exam when you were not sick or injured?; a: During the past 12 months ; b: Between 12 and 24 months ago ; c: More than 24 months ago ; d: Never ; e: Not sure;

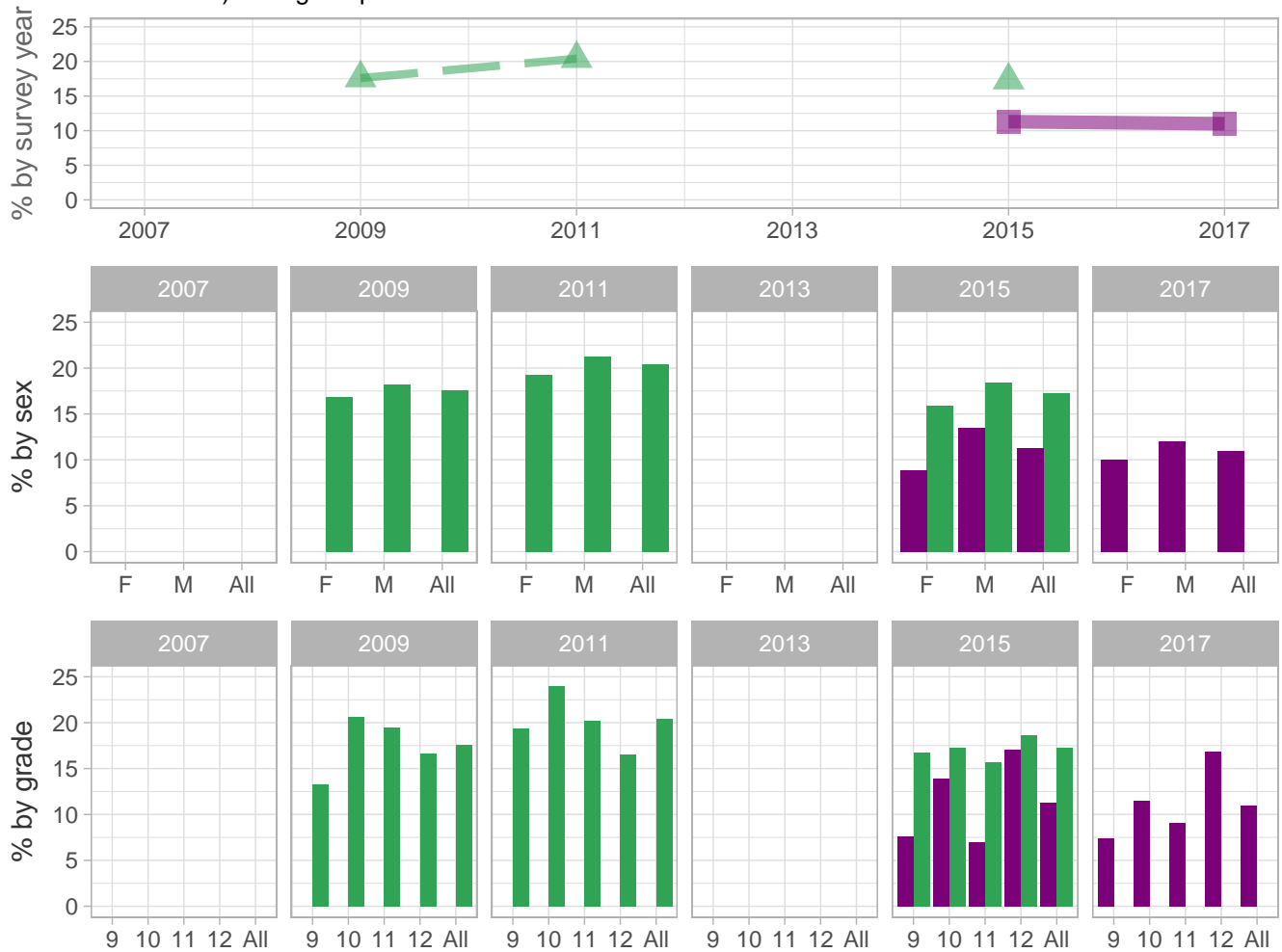
Percent (pct): numerator: bcde; denominator: abcde; qid: 114; 2007q999; 2009q75; 2011q74; 2013q999; 2015q69; 2017q74; Number (n): Estimated number of students projected based on school enrollment data.

-: Data not available; *: Suppressed due to small cell sizes.

 School
  Region
  NH

Other Health Risks

Percent of students who did not see a dentist (for a check-up, exam, teeth cleaning, or other dental work) during the past 12 months



School-level by Sex and Grade

		2009(pct)	2011(pct)	2013(pct)	2015(pct)	2017(pct)	2017(n)
By sex	F	-	*	-	8.9	10.0	43
	M	-	*	-	13.5	12.0	56
By grade	9th	-	*	-	7.6	7.4	20
	10th	-	*	-	13.9	11.5	26
	11th	-	-	-	7.0	9.1	20
	12th	-	-	-	17.1	16.9	33
All	All	-	*	-	11.3	11.0	100

How the question was actually asked: When was the last time you saw a dentist for a check-up, exam, teeth cleaning, or other dental work?; a: During the past 12 months ; b: Between 12 and 24 months ago ; c: More than 24 months ago ; d: Never ; e: Not sure;

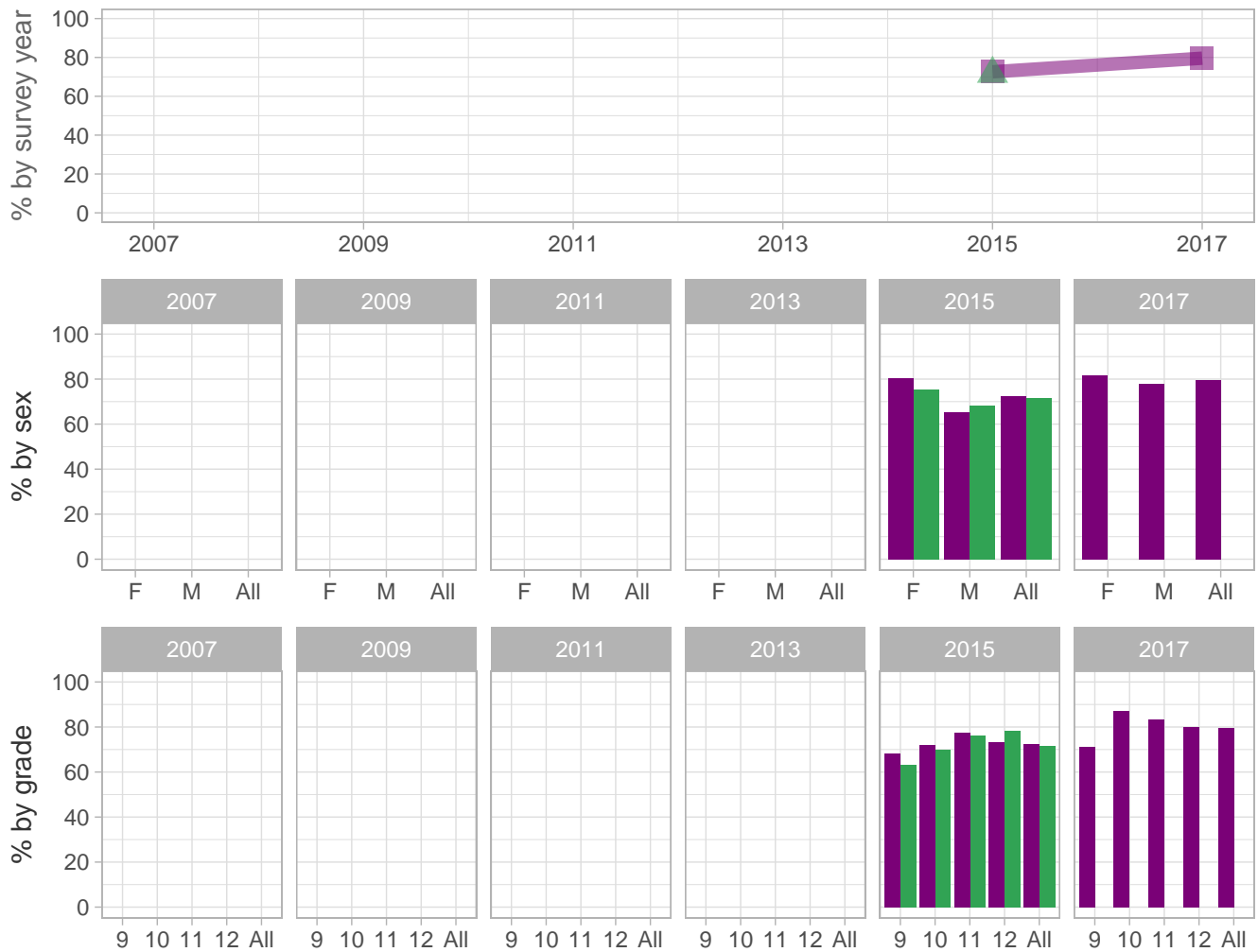
Percent (pct): numerator: bcde; denominator: abcde; qid: 115; 2007q999; 2009q76; 2011q75; 2013q999; 2015q68; 2017q75; Number (n): Estimated number of students projected based on school enrollment data.

-: Data not available; *: Suppressed due to small cell sizes.

 School
  Region
  NH

Other Health Risks

Percent of students who did not have 8 or more hours of sleep on an average school night



School-level by Sex and Grade

		2009(pct)	2011(pct)	2013(pct)	2015(pct)	2017(pct)	2017(n)
By sex	F	-	-	-	80.5	81.5	348
	M	-	-	-	65.1	77.9	362
By grade	9th	-	-	-	68.4	71.2	188
	10th	-	-	-	72.1	87.0	195
	11th	-	-	-	77.6	83.3	181
	12th	-	-	-	73.4	79.9	153
All	All	-	-	-	72.6	79.6	718

How the question was actually asked: On an average school night, how many hours of sleep do you get?; a: 4 or less hours ; b: 5 hours ; c: 6 hours ; d: 7 hours ; e: 8 hours ; f: 9 hours ; g: 10 or more hours;

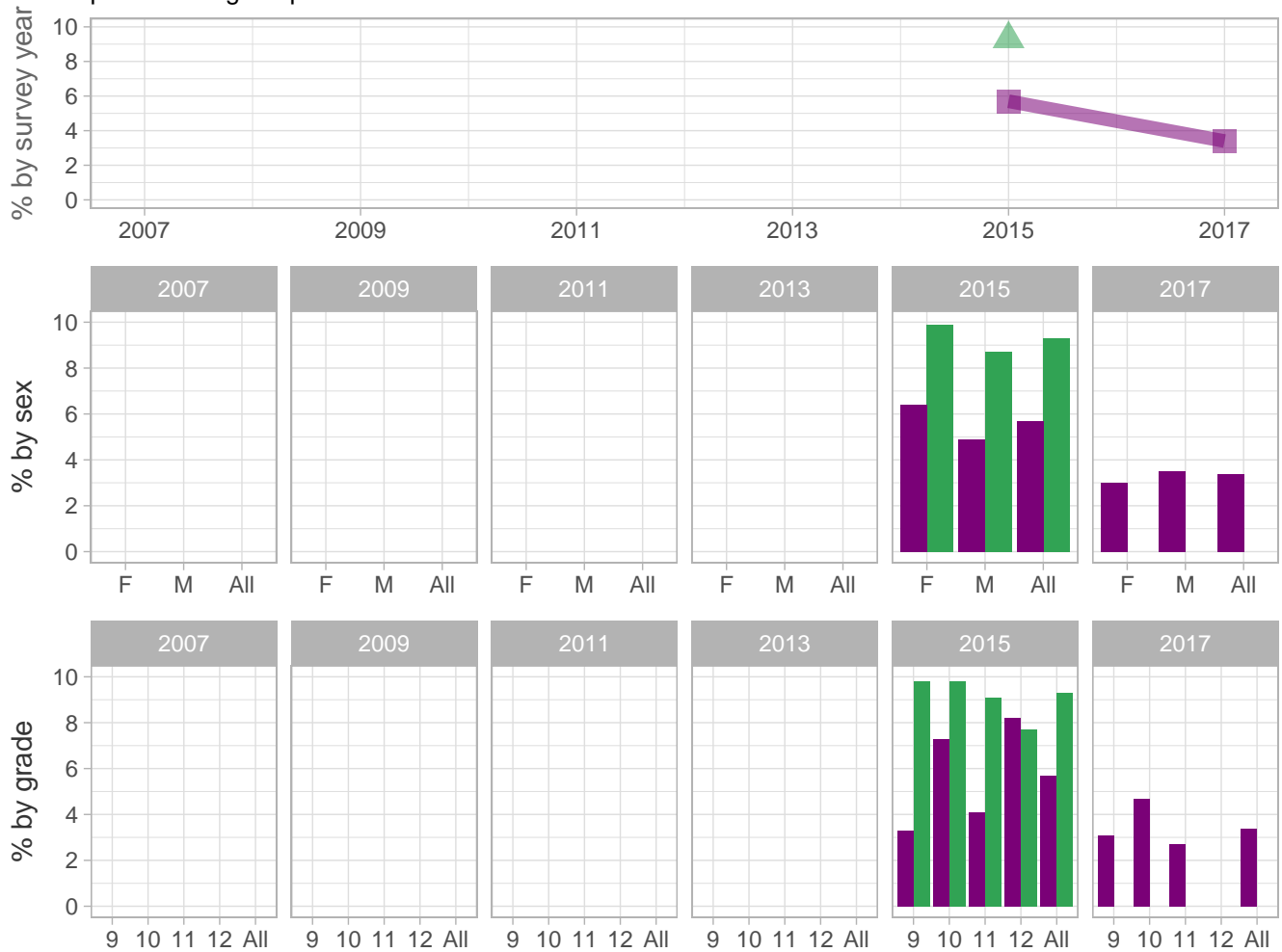
Percent (pct): numerator: abcd; denominator: abcdefg; qid: 175; 2007q999; 2009q999; 2011q999; 2013q999; 2015q71; 2017q76; Number (n): Estimated number of students projected based on school enrollment data.

-: Data not available; *: Suppressed due to small cell sizes.

 School
  Region
  NH

Other Health Risks

Percent of students who had either parents or other adults in their family been in jail or in prison during the past 12 months



School-level by Sex and Grade

		2009(pct)	2011(pct)	2013(pct)	2015(pct)	2017(pct)	2017(n)
By sex	F	-	-	-	6.4	3.0	13
	M	-	-	-	4.9	3.5	17
By grade	9th	-	-	-	3.3	3.1	9
	10th	-	-	-	7.3	4.7	11
	11th	-	-	-	4.1	2.7	6
	12th	-	-	-	8.2	*	*
All	All	-	-	-	5.7	3.4	31

How the question was actually asked: During the past 12 months, have either of your parents or other adults in your family been in jail or in prison?; a: Yes ; b: No ; c: Not sure;

Percent (pct): numerator: a; denominator: abc; qid: 177; 2007q999; 2009q999; 2011q999; 2013q999; 2015q73; 2017q77;

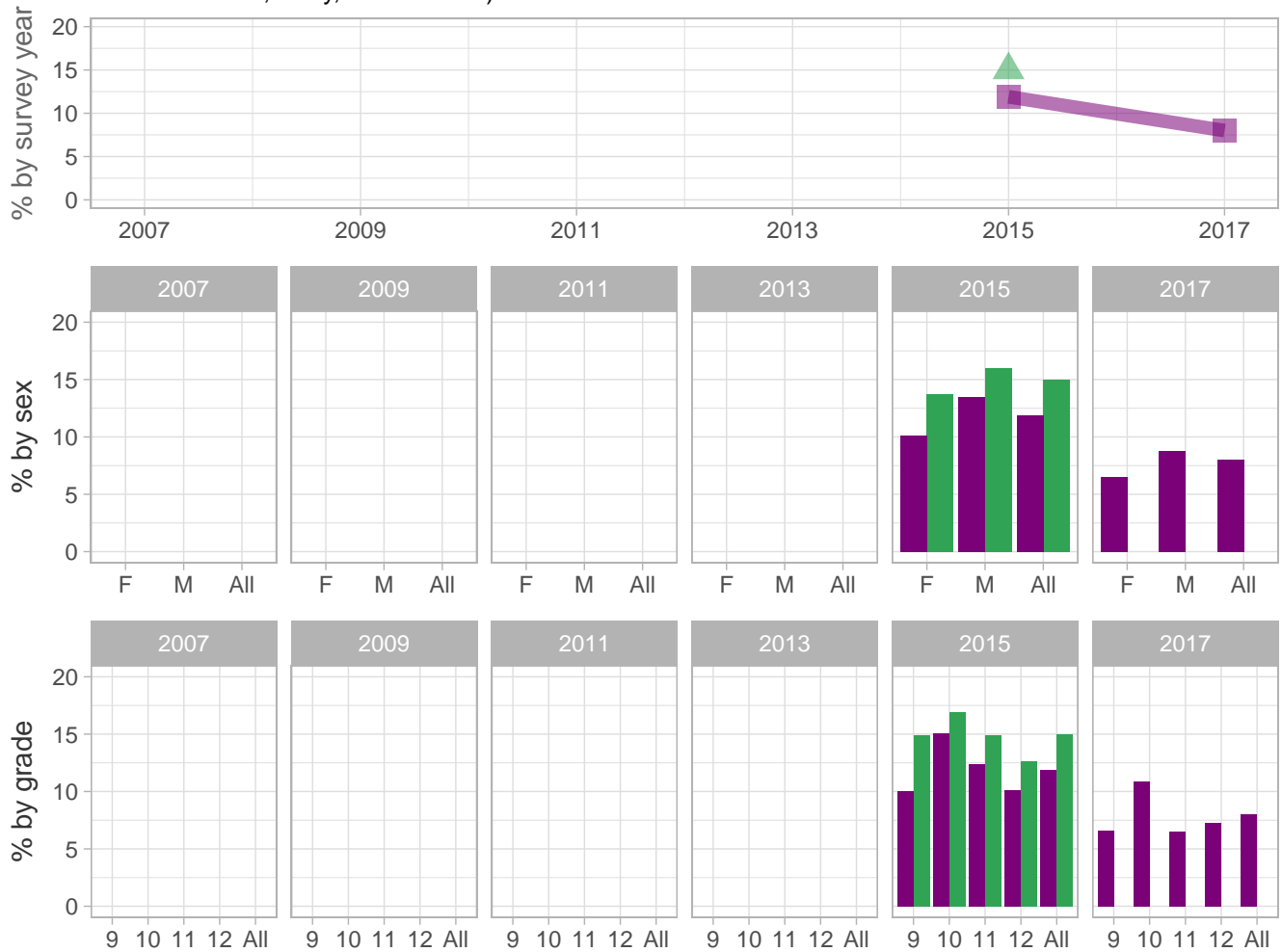
Number (n): Estimated number of students projected based on school enrollment data.

-: Data not available; *: Suppressed due to small cell sizes.

 School  Region  NH

Other Health Risks

Percent of students who had a family member currently in the military (Air Force, Army, Marines, National Guard, Navy, or Reserves)



School-level by Sex and Grade

		2009(pct)	2011(pct)	2013(pct)	2015(pct)	2017(pct)	2017(n)
By sex	F	-	-	-	10.1	6.5	28
	M	-	-	-	13.5	8.8	41
By grade	9th	-	-	-	10.0	6.6	18
	10th	-	-	-	15.1	10.9	25
	11th	-	-	-	12.4	6.5	14
	12th	-	-	-	10.1	7.3	14
All	All	-	-	-	11.9	8.0	72

How the question was actually asked: Do you have someone in your family (a parent, brother, or sister) who is currently in the military (Air Force, Army, Marines, National Guard, Navy, or Reserves)?; a: Yes ; b: No;

Percent (pct): numerator: a; denominator: ab; qid: 176; 2007q999; 2009q999; 2011q999; 2013q999; 2015q72; 2017q79;

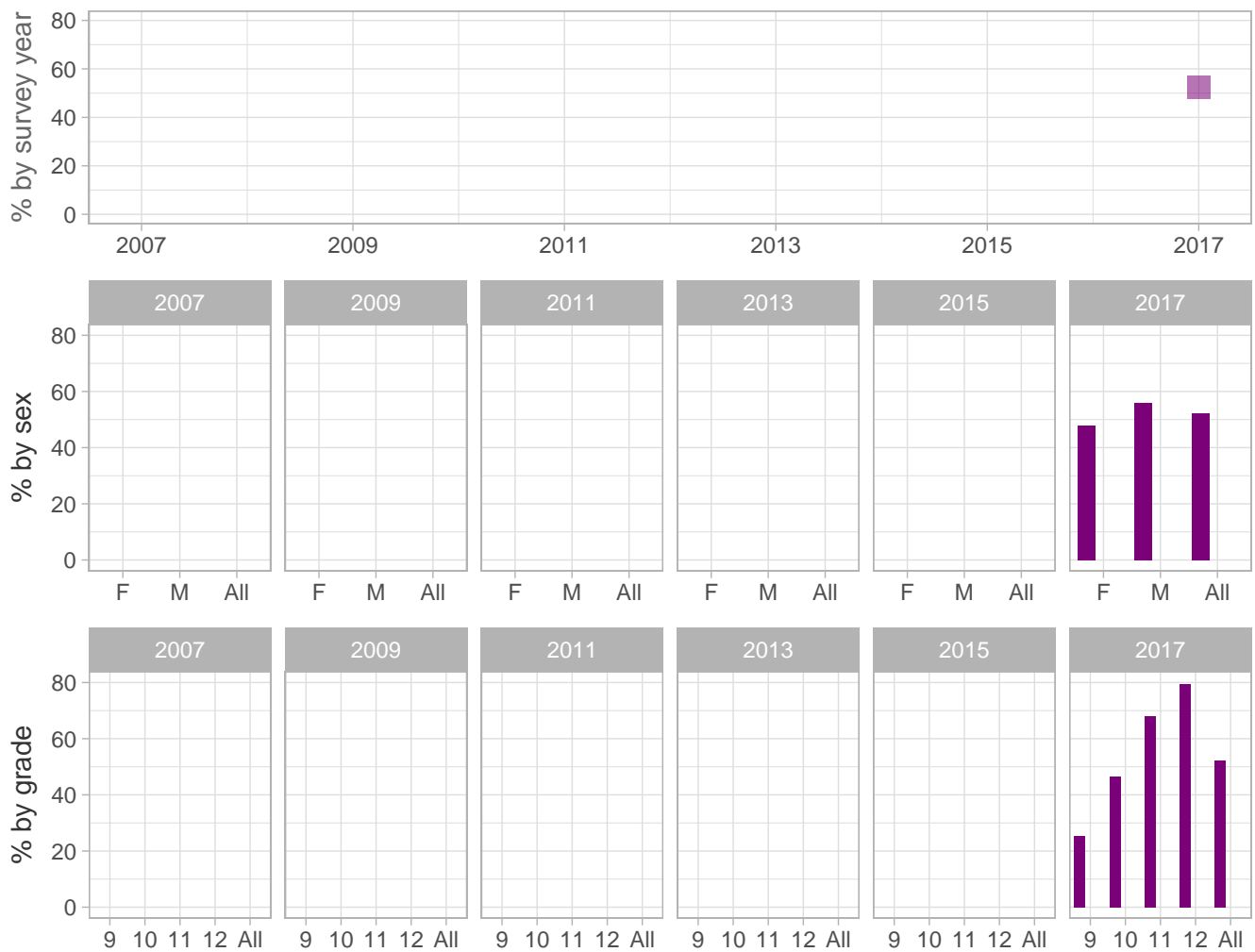
Number (n): Estimated number of students projected based on school enrollment data.

-: Data not available; *: Suppressed due to small cell sizes.

 School
  Region
  NH

Other Health Risks

Percent of students who worked for pay during the past 12 months



School-level by Sex and Grade

		2009(pct)	2011(pct)	2013(pct)	2015(pct)	2017(pct)	2017(n)
By sex	F	-	-	-	-	48.0	207
	M	-	-	-	-	56.0	258
By grade	9th	-	-	-	-	25.4	69
	10th	-	-	-	-	46.4	105
	11th	-	-	-	-	67.9	147
	12th	-	-	-	-	79.6	147
All	All	-	-	-	-	52.3	472

How the question was actually asked: During the past 12 months, which one of the following best describes the place where you most recently worked for pay? (Do not count chores, babysitting, or yard work such as raking leaves, shoveling snow, or mowing grass.); a: I did not work for pay during the past 12 months ; b: Restaurant, including a fast food restaurant, pizza place, coffee shop, or ice cream shop ; c: Grocery store or supermarket or other type of store, such as a clothing store, gas station, pharmacy, or pet store ; d: Nursing home, hospital, clinic, or doctor's office ; e: Golf course, camp, sports center, swimming pool, amusement park, or movie theater, or other place people go for fun ; f: Construction site ; g: Farm ; h: Some other place;

Percent (pct): numerator: bcdefgh; denominator: abcdefgh; qid: 196; 2007q999; 2009q999; 2011q999; 2013q999; 2015q999;

2017q80;

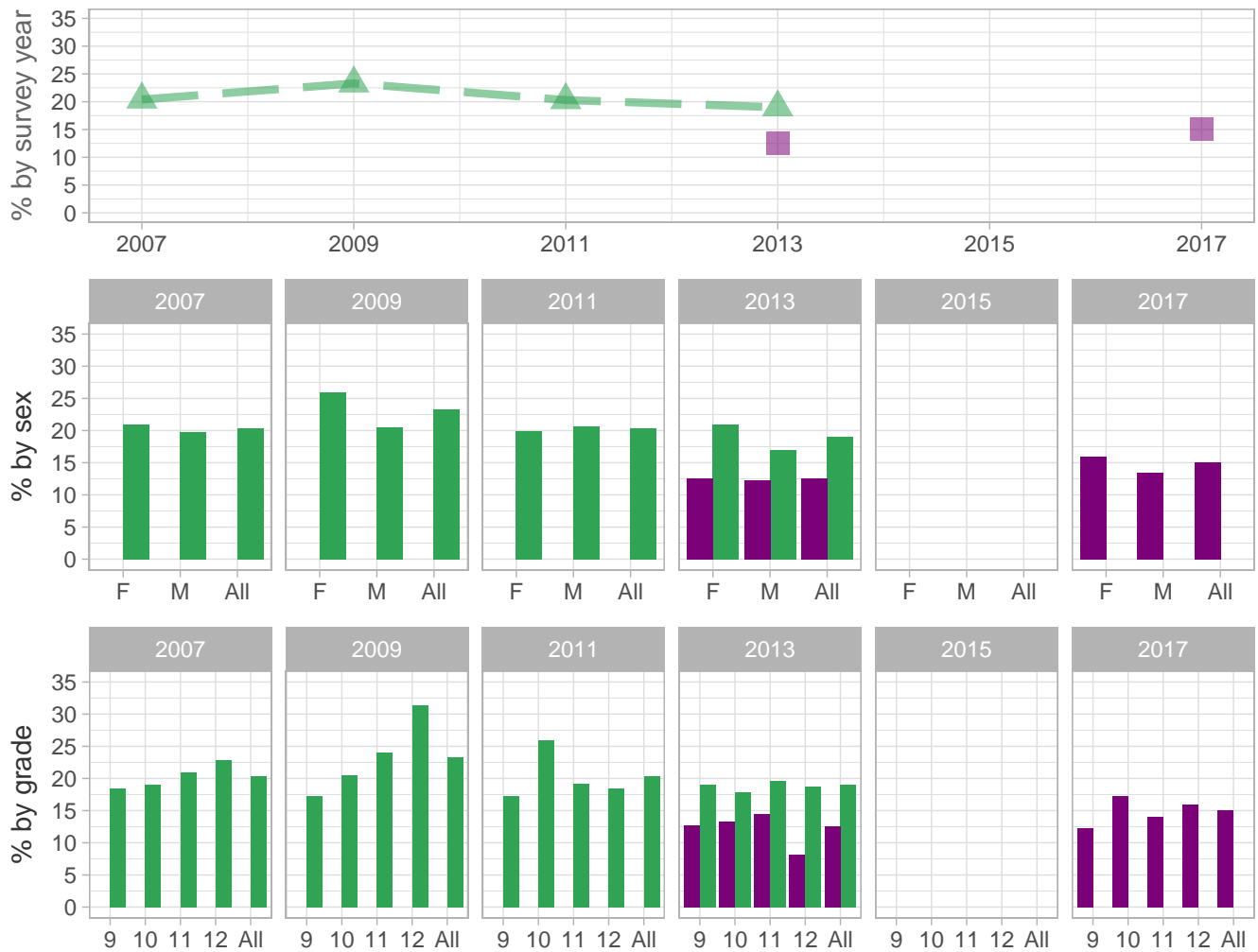
Number (n): Estimated number of students projected based on school enrollment data.

-: Data not available; *: Suppressed due to small cell sizes.

 School  Region  NH

Other Health Risks

Percent of students who do not believe that they matter to people in their community



School-level by Sex and Grade

		2009(pct)	2011(pct)	2013(pct)	2015(pct)	2017(pct)	2017(n)
By sex	F	-	*	12.5	-	16.0	69
	M	-	*	12.3	-	13.4	62
By grade	9th	-	*	12.7	-	12.3	33
	10th	-	*	13.3	-	17.2	39
	11th	-	-	14.5	-	14.0	31
	12th	-	-	8.2	-	16.0	31
All	All	-	*	12.5	-	15.0	135

How the question was actually asked: Do you agree or disagree that in your community you feel like you matter to people?; a: Strongly agree ; b: Agree ; c: Not sure ; d: Disagree ; e: Strongly disagree;

Percent (pct): numerator: de; denominator: abcde; qid: 78; 2007q78; 2009q80; 2011q81; 2013q80; 2015q999; 2017q81;

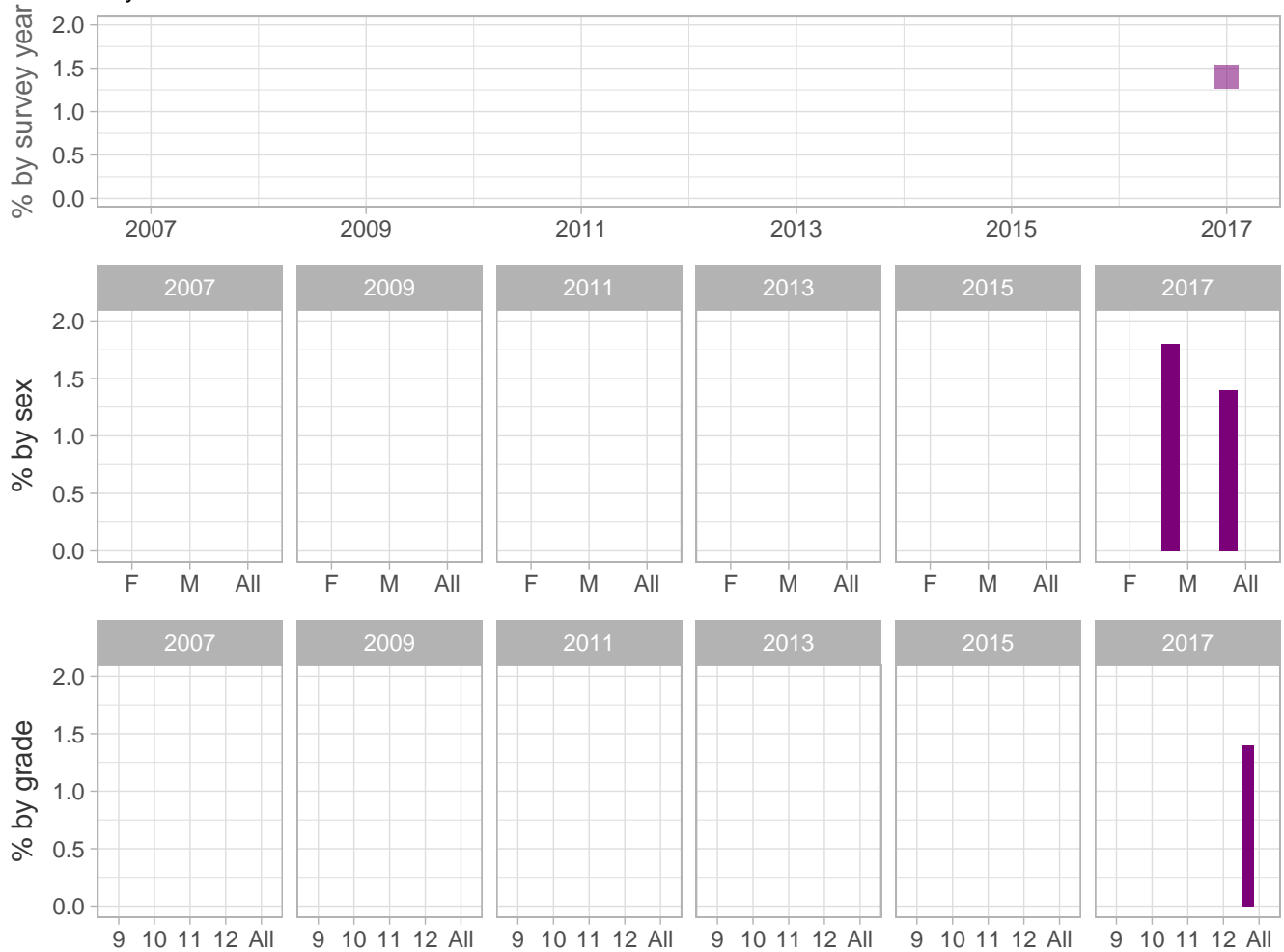
Number (n): Estimated number of students projected based on school enrollment data.

-: Data not available; *: Suppressed due to small cell sizes.

 School
  Region
  NH

Other Health Risks

Percent of students who were not able to sleep in their parent or guardians home during the past 30 days



School-level by Sex and Grade

		2009(pct)	2011(pct)	2013(pct)	2015(pct)	2017(pct)	2017(n)
By sex	F	-	-	-	-	*	*
	M	-	-	-	-	1.8	9
By grade	9th	-	-	-	-	*	*
	10th	-	-	-	-	*	*
	11th	-	-	-	-	*	*
	12th	-	-	-	-	*	*
All	All	-	-	-	-	1.4	13

How the question was actually asked: During the past 30 days, where did you usually sleep?; a: In my parent's or guardian's home ; b: In the home of a friend, family member, or other person because I had to leave my home or my parent or guardian cannot afford housing ; c: In a shelter or emergency housing ; d: In a motel or hotel ; e: In a car, park, campground, or other public place ; f: I do not have a usual place to sleep ; g: Somewhere else;

Percent (pct): numerator: bcdefg; denominator: abcdefg; qid: 197; 2007q999; 2009q999; 2011q999; 2013q999; 2015q999; 2017q82;

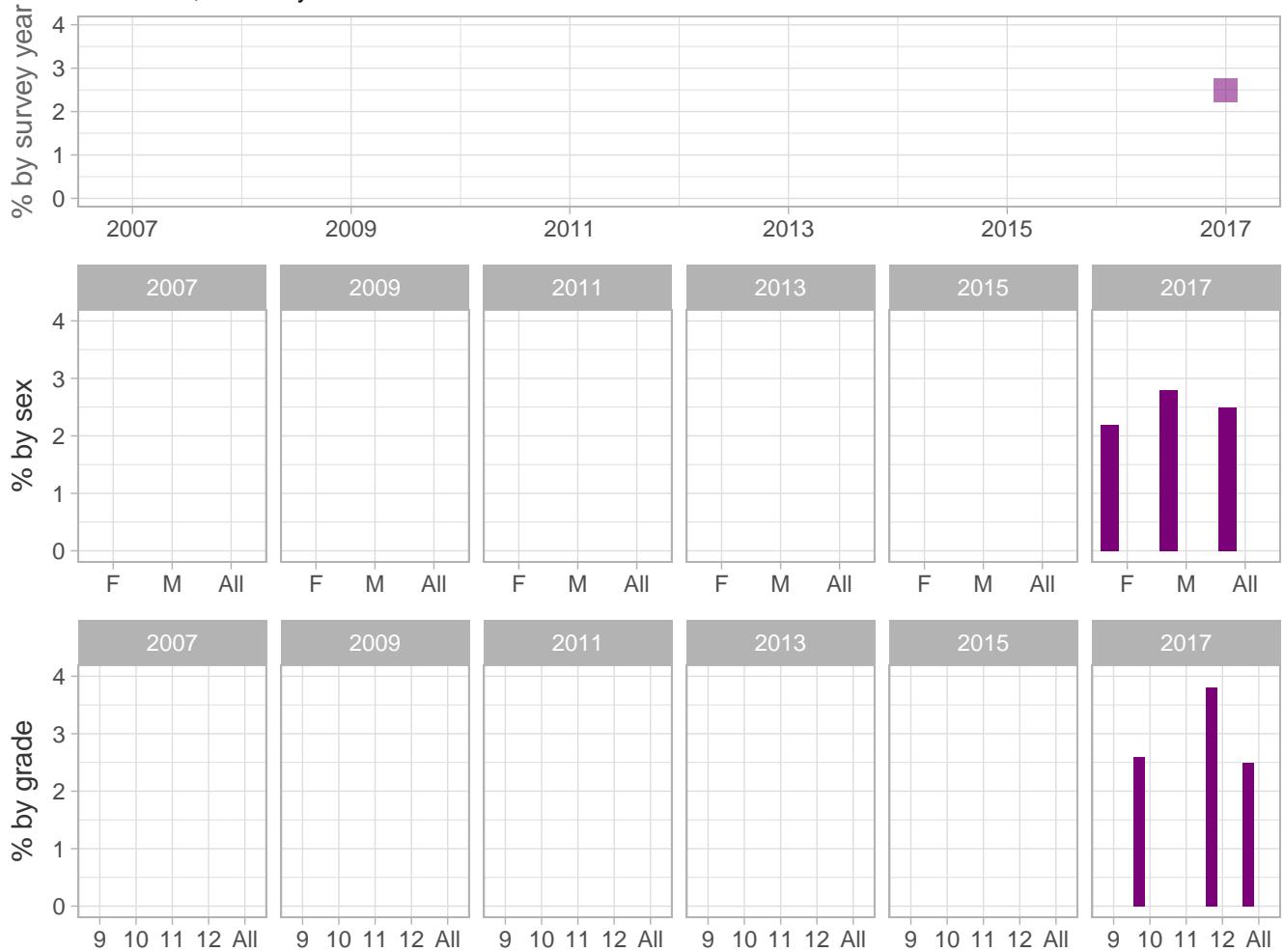
Number (n): Estimated number of students projected based on school enrollment data.

-: Data not available; *: Suppressed due to small cell sizes.

 School
  Region
  NH

Other Health Risks

Percent of students who had ever slept away from their parents or guardians because they were kicked out, ran away or were abandoned



School-level by Sex and Grade

		2009(pct)	2011(pct)	2013(pct)	2015(pct)	2017(pct)	2017(n)
By sex	F	-	-	-	-	2.2	10
	M	-	-	-	-	2.8	14
By grade	9th	-	-	-	-	*	*
	10th	-	-	-	-	2.6	6
	11th	-	-	-	-	*	*
	12th	-	-	-	-	3.8	8
All	All	-	-	-	-	2.5	23

How the question was actually asked: During the past 30 days, did you ever sleep away from your parents or guardians because you were kicked out, ran away, or were abandoned?; a: Yes ; b: No;

Percent (pct): numerator: a; denominator: ab; qid: 198; 2007q999; 2009q999; 2011q999; 2013q999; 2015q999; 2017q83;

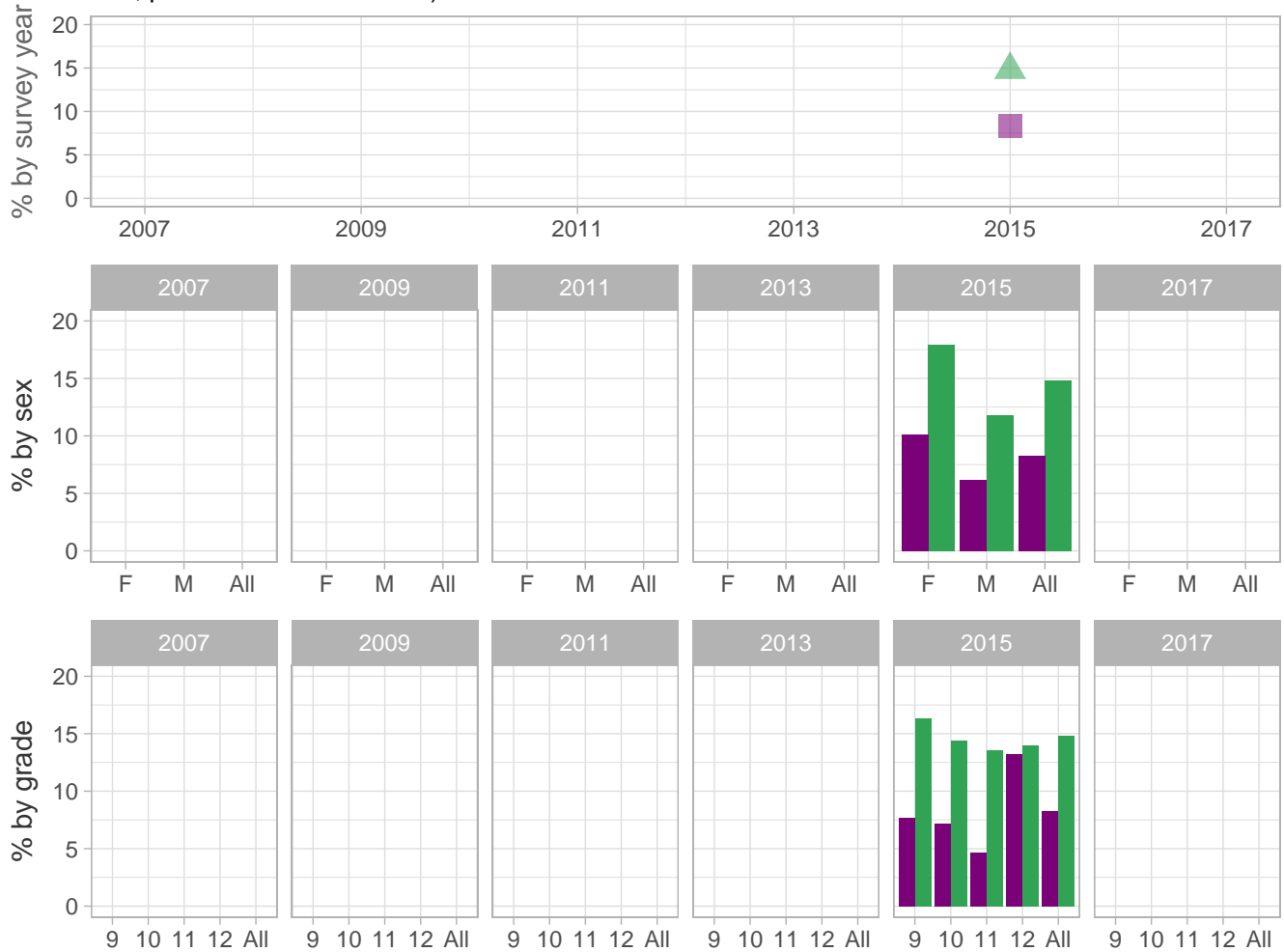
Number (n): Estimated number of students projected based on school enrollment data.

-: Data not available; *: Suppressed due to small cell sizes.

 School
  Region
  NH

Other Health Risks

Percent of students who had ever seen or heard domestic violence in their home (such as slap, hit, kick, punch or hurt each other)



School-level by Sex and Grade

		2009(pct)	2011(pct)	2013(pct)	2015(pct)	2017(pct)	2017(n)
By sex	F	-	-	-	10.1	-	-
	M	-	-	-	6.2	-	-
By grade	9th	-	-	-	7.7	-	-
	10th	-	-	-	7.2	-	-
	11th	-	-	-	4.7	-	-
	12th	-	-	-	13.2	-	-
All	All	-	-	-	8.3	-	-

How the question was actually asked: Have you ever seen or heard adults in your home slap, hit, kick, punch, or hurt each other?; a: Yes; b: No;

Percent (pct): numerator: a; denominator: ab; qid: 171; 2007q999; 2009q999; 2011q999; 2013q999; 2015q22; 2017q999;

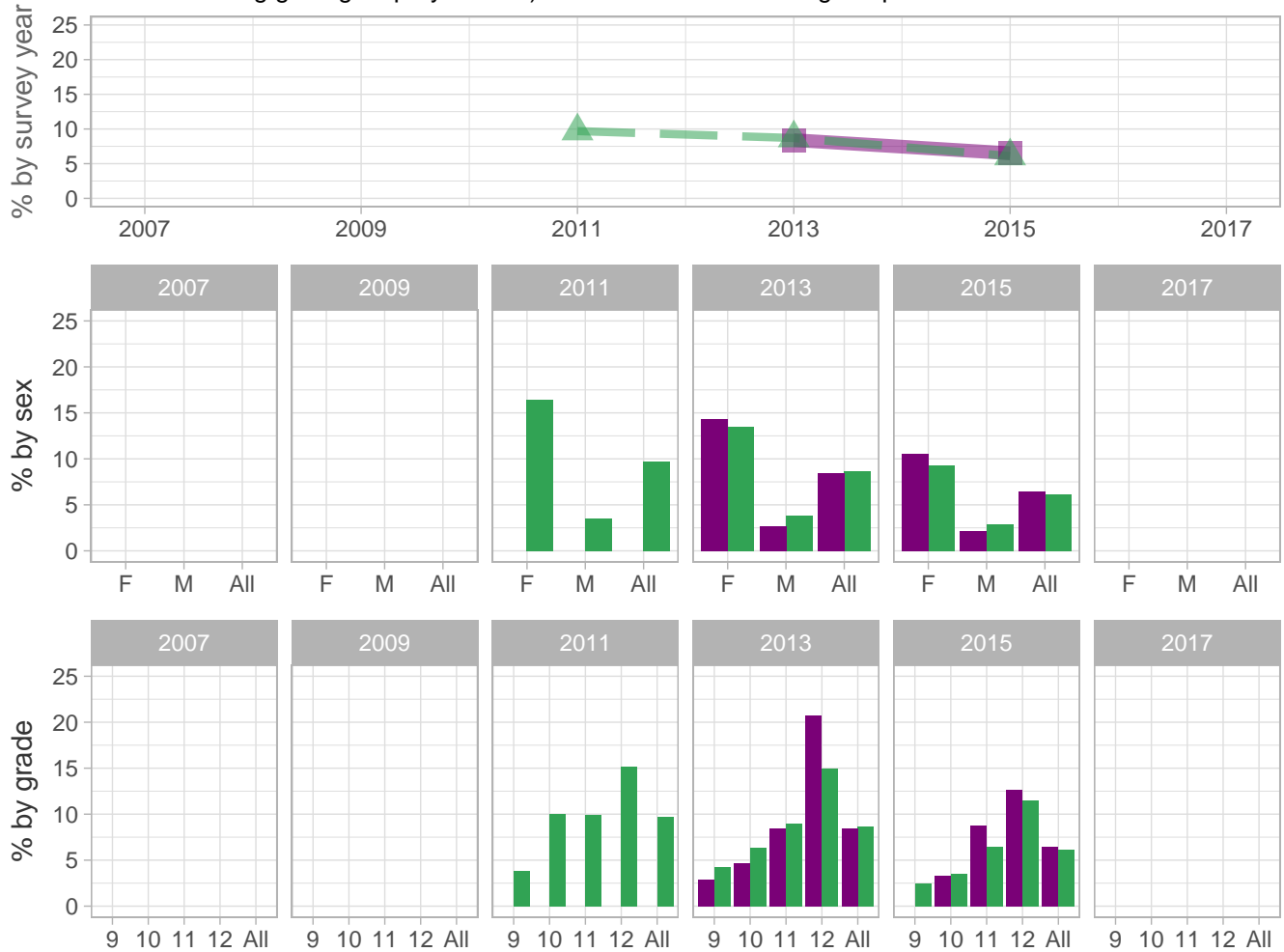
Number (n): Estimated number of students projected based on school enrollment data.

-: Data not available; *: Suppressed due to small cell sizes.

 School
  Region
  NH

Other Health Risks

Percent of students who used an indoor tanning device (such as a sunlamp, sunbed, or tanning booth -- not counting getting a spray-on tan) one or more times during the past 12 months



School-level by Sex and Grade

		2009(pct)	2011(pct)	2013(pct)	2015(pct)	2017(pct)	2017(n)
By sex	F	-	*	14.3	10.6	-	-
	M	-	*	2.7	2.2	-	-
By grade	9th	-	*	2.9	*	-	-
	10th	-	*	4.7	3.3	-	-
	11th	-	-	8.5	8.8	-	-
	12th	-	-	20.7	12.7	-	-
All	All	-	*	8.4	6.5	-	-

How the question was actually asked: During the past 12 months, how many times did you use an indoor tanning device such as a sunlamp, sunbed, or tanning booth? (Do not count getting a spray-on tan.); a: 0 times; b: 1 or 2 times; c: 3 to 9 times; d: 10 to 19 times; e: 20 to 39 times; f: 40 times or more;

Percent (pct): numerator: bcdef; denominator: abcdef; qid: 131; 2007q999; 2009q999; 2011q76; 2013q74; 2015q67; 2017q999; Number (n): Estimated number of students projected based on school enrollment data.

-: Data not available; *: Suppressed due to small cell sizes.

 School
  Region
  NH

Other Health Risks

Percent of students who had ever been told by a doctor or nurse that they had asthma



School-level by Sex and Grade

		2009(pct)	2011(pct)	2013(pct)	2015(pct)	2017(pct)	2017(n)
By sex	F	-	*	20.3	23.6	-	-
	M	-	*	22.3	21.8	-	-
By grade	9th	-	*	21.7	20.3	-	-
	10th	-	*	24.3	22.8	-	-
	11th	-	-	19.6	22.4	-	-
	12th	-	-	18.5	25.3	-	-
All	All	-	*	21.4	22.7	-	-

How the question was actually asked: Has a doctor or nurse ever told you that you have asthma?; a: Yes; b: No; c: Not sure;

Percent (pct): numerator: a; denominator: abc; qid: 129; 2007q999; 2009q999; 2011q72; 2013q72; 2015q70; 2017q999;

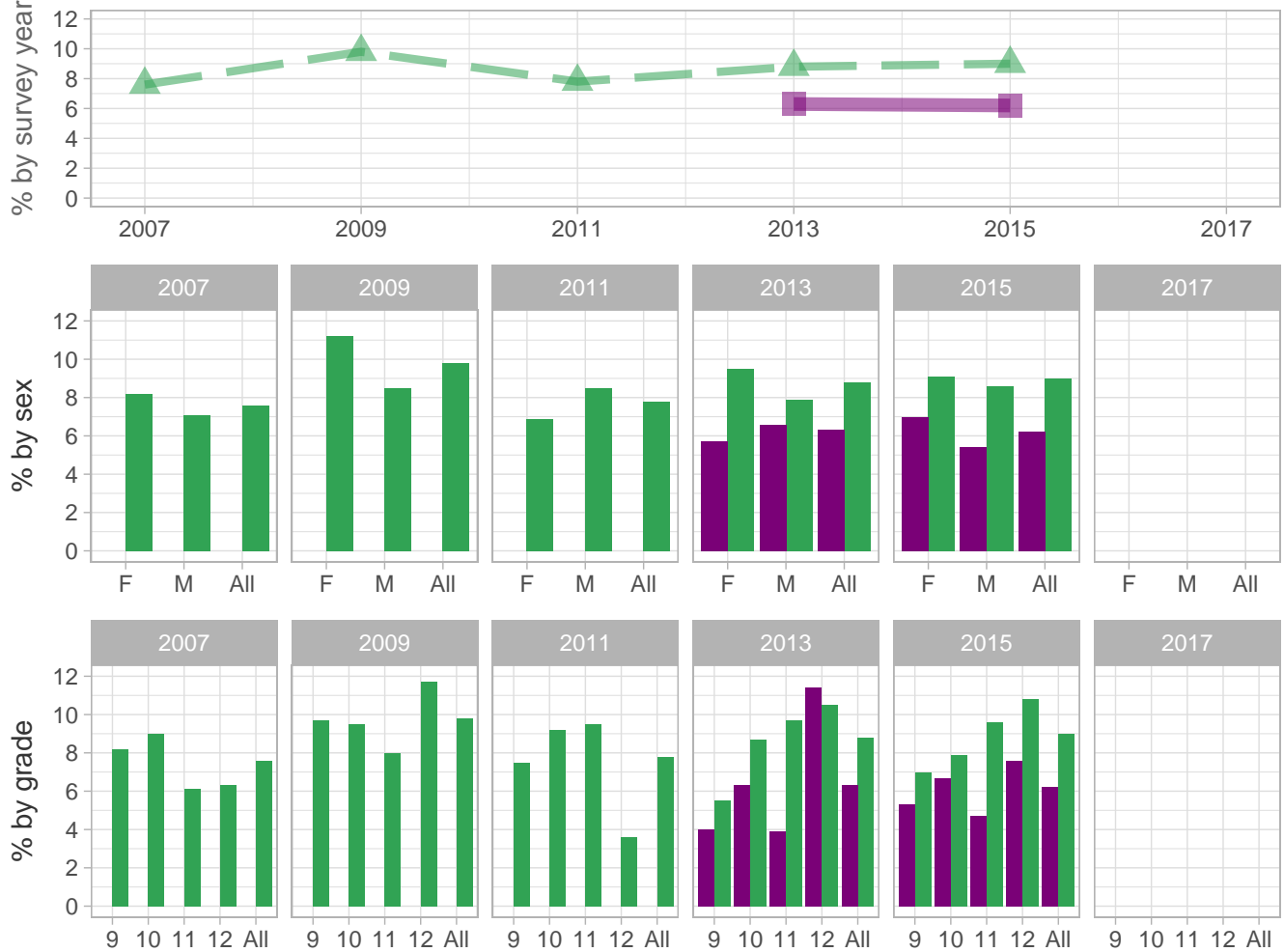
Number (n): Estimated number of students projected based on school enrollment data.

-: Data not available; *: Suppressed due to small cell sizes.

 School
  Region
  NH

Other Health Risks

Percent of students who do not believe that family members have clear rules/consequences for their behavior



School-level by Sex and Grade

		2009(pct)	2011(pct)	2013(pct)	2015(pct)	2017(pct)	2017(n)
By sex	F	-	*	5.7	7.0	-	-
	M	-	*	6.6	5.4	-	-
By grade	9th	-	*	4.0	5.3	-	-
	10th	-	*	6.3	6.7	-	-
	11th	-	-	3.9	4.7	-	-
	12th	-	-	11.4	7.6	-	-
All	All	-	*	6.3	6.2	-	-

How the question was actually asked: Do you agree or disagree that your parents or other adults in your family have clear rules and consequences for your behavior?; a: Strongly agree; b: Agree; c: Not sure; d: Disagree; e: Strongly disagree;

Percent (pct): numerator: de; denominator: abcde; qid: 73; 2007q73; 2009q77; 2011q77; 2013q76; 2015q74; 2017q999;

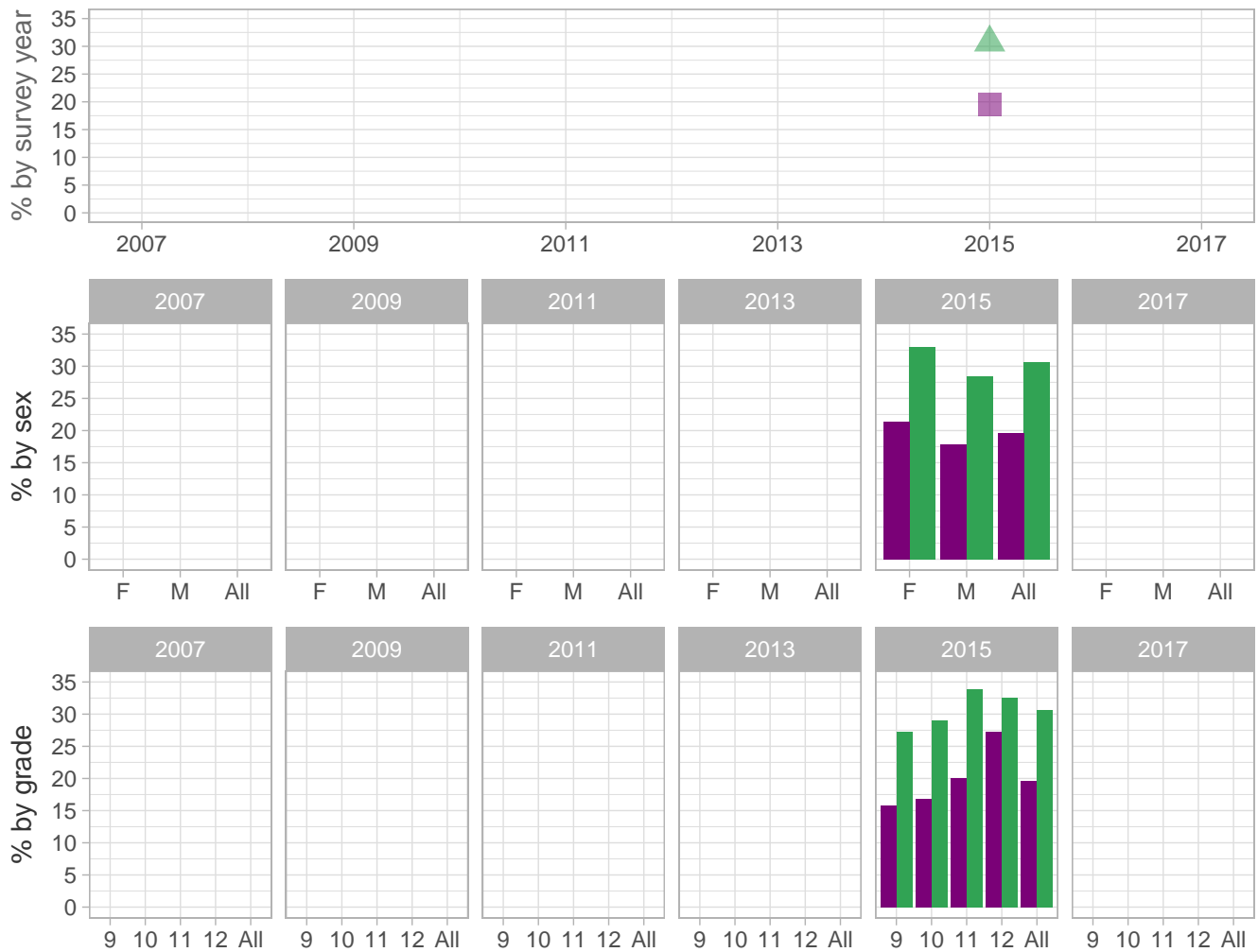
Number (n): Estimated number of students projected based on school enrollment data.

-: Data not available; *: Suppressed due to small cell sizes.

 School
  Region
  NH

Other Health Risks

Percent of students who had ever lived with someone who had a problem with alcohol or drugs



School-level by Sex and Grade

		2009(pct)	2011(pct)	2013(pct)	2015(pct)	2017(pct)	2017(n)
By sex	F	-	-	-	21.4	-	-
	M	-	-	-	17.9	-	-
By grade	9th	-	-	-	15.8	-	-
	10th	-	-	-	16.9	-	-
	11th	-	-	-	20.0	-	-
	12th	-	-	-	27.2	-	-
All	All	-	-	-	19.6	-	-

How the question was actually asked: Have you ever lived with anyone who had a problem with alcohol or drugs?; a: Yes; b: No; c: Not sure;

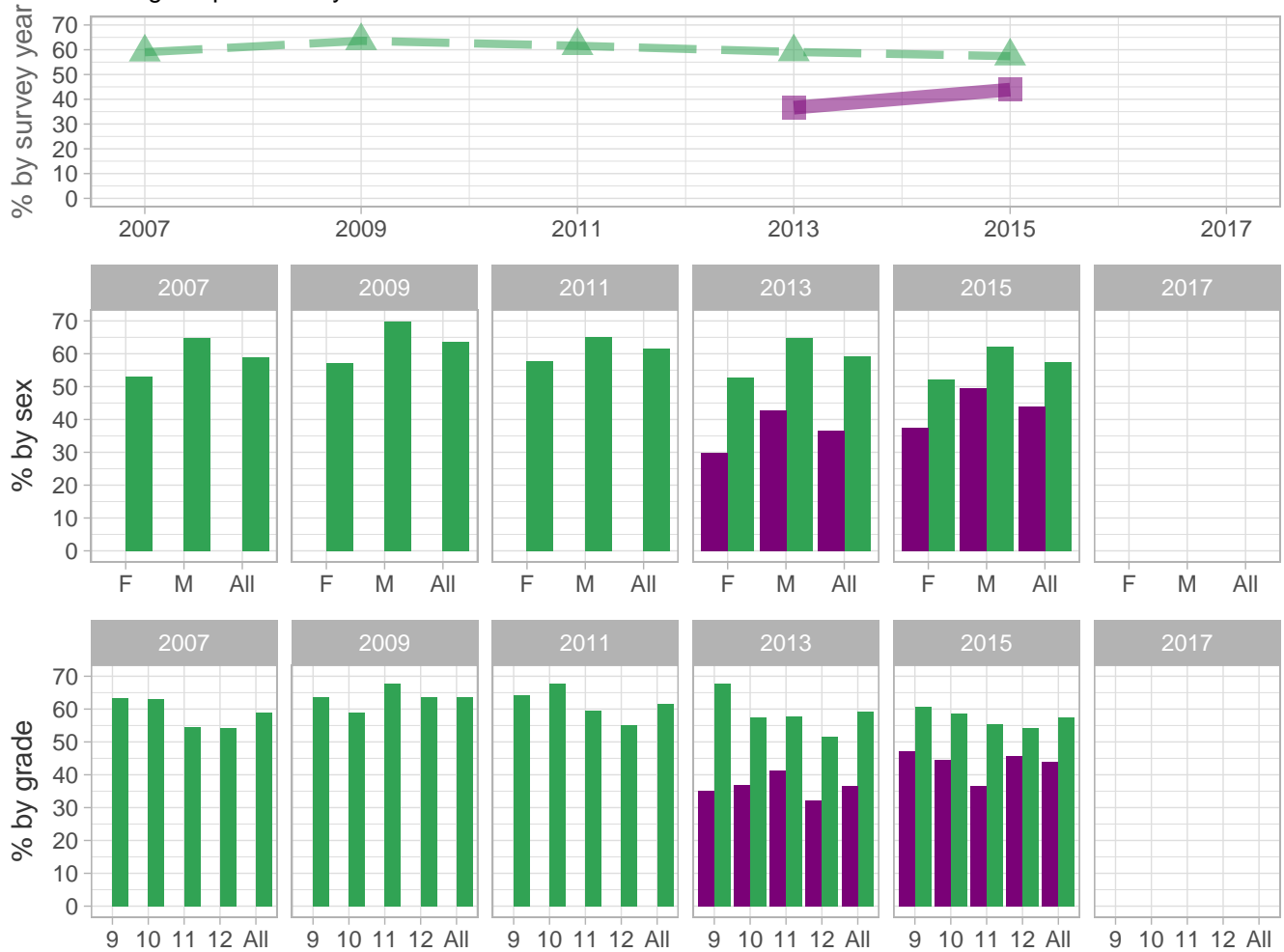
Percent (pct): numerator: a; denominator: abc; qid: 179; 2007q999; 2009q999; 2011q999; 2013q999; 2015q76; 2017q999; Number (n): Estimated number of students projected based on school enrollment data.

-: Data not available; *: Suppressed due to small cell sizes.

 School
  Region
  NH

Other Health Risks

Percent of students who did not perform any organized community service as a non-paid volunteer during the past 30 days



School-level by Sex and Grade

		2009(pct)	2011(pct)	2013(pct)	2015(pct)	2017(pct)	2017(n)
By sex	F	-	*	29.8	37.6	-	-
	M	-	*	42.7	49.6	-	-
By grade	9th	-	*	35.1	47.1	-	-
	10th	-	*	36.8	44.4	-	-
	11th	-	-	41.2	36.5	-	-
	12th	-	-	32.1	45.6	-	-
All	All	-	*	36.6	43.9	-	-

How the question was actually asked: During the past 30 days, how many times did you perform any organized community service as a non-paid volunteer, such as serving meals to the elderly, picking up litter, helping out at a hospital, or building homes for the poor?; a: 0 times; b: 1 time; c: 2 or 3 times; d: 4 or 5 times; e: 6 or more times;

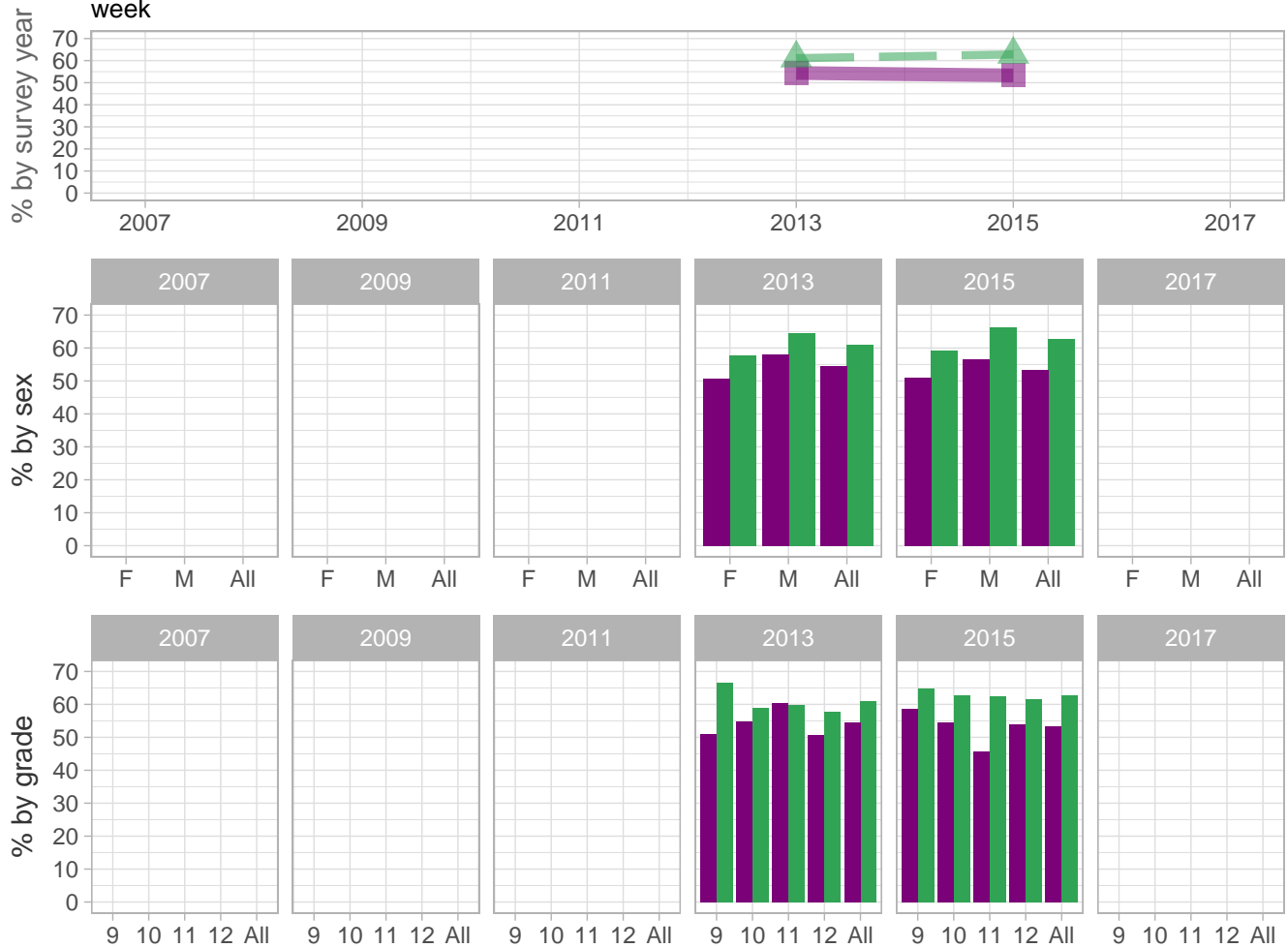
Percent (pct): numerator: a; denominator: abcde; qid: 76; 2007q76; 2009q78; 2011q79; 2013q78; 2015q80; 2017q999;
Number (n): Estimated number of students projected based on school enrollment data.

-: Data not available; *: Suppressed due to small cell sizes.

 School
  Region
  NH

Other Health Risks

Percent of students who did not participate in activities run by community groups (such as activities run by 4-H, Boys and Girls Club, YMCA, sports clubs, or church groups) during an average week



School-level by Sex and Grade

		2009(pct)	2011(pct)	2013(pct)	2015(pct)	2017(pct)	2017(n)
By sex	F	-	-	50.8	50.9	-	-
	M	-	-	58.0	56.5	-	-
By grade	9th	-	-	51.1	58.6	-	-
	10th	-	-	54.7	54.5	-	-
	11th	-	-	60.3	45.6	-	-
	12th	-	-	50.7	53.8	-	-
All	All	-	-	54.4	53.3	-	-

How the question was actually asked: During an average week when you are in school, how many total hours do you participate in activities run by community groups? (Count time spent on activities run by 4-H, Boys and Girls Club, YMCA, sports clubs, or church groups.); a: 0 hours; b: 1 to 4 hours; c: 5 to 9 hours; d: 10 to 19 hours; e: 20 or more hours;

Percent (pct): numerator: a; denominator: abcde; qid: 158; 2007q999; 2009q999; 2011q999; 2013q79; 2015q81; 2017q999; Number (n): Estimated number of students projected based on school enrollment data.

-: Data not available; *: Suppressed due to small cell sizes.

 School
  Region
  NH

Other Health Risks

Percent of students who still had asthma among who had ever been told that they had asthma



School-level by Sex and Grade

		2009(pct)	2011(pct)	2013(pct)	2015(pct)	2017(pct)	2017(n)
By sex	F	-	*	44.7	-	-	-
	M	-	*	34.6	-	-	-
By grade	9th	-	*	47.6	-	-	-
	10th	-	*	54.9	-	-	-
	11th	-	-	39.2	-	-	-
	12th	-	-	15.2	-	-	-
All	All	-	*	39.3	-	-	-

How the question was actually asked: Do you still have asthma?; a: I have never had asthma; b: Yes; c: No; d: Not sure;

Percent (pct): numerator: b; denominator: bc; qid: 130; 2007q999; 2009q999; 2011q73; 2013q73; 2015q999; 2017q999;

Number (n): Estimated number of students projected based on school enrollment data.

-: Data not available; *: Suppressed due to small cell sizes.

 School  Region  NH

Other Health Risks

Percent of students who had parents or adults in their family serving in the military



School-level by Sex and Grade

		2009(pct)	2011(pct)	2013(pct)	2015(pct)	2017(pct)	2017(n)
By sex	F	-	*	11.8	-	-	-
	M	-	*	8.7	-	-	-
By grade	9th	-	*	9.2	-	-	-
	10th	-	*	8.9	-	-	-
	11th	-	-	8.6	-	-	-
	12th	-	-	14.9	-	-	-
All	All	-	*	10.1	-	-	-

How the question was actually asked: Are either of your parents or other adults in your family serving on active duty in the military?; a: Yes; b: No;

Percent (pct): numerator: a; denominator: ab; qid: 141; 2007q999; 2009q999; 2011q100; 2013q75; 2015q999; 2017q999;

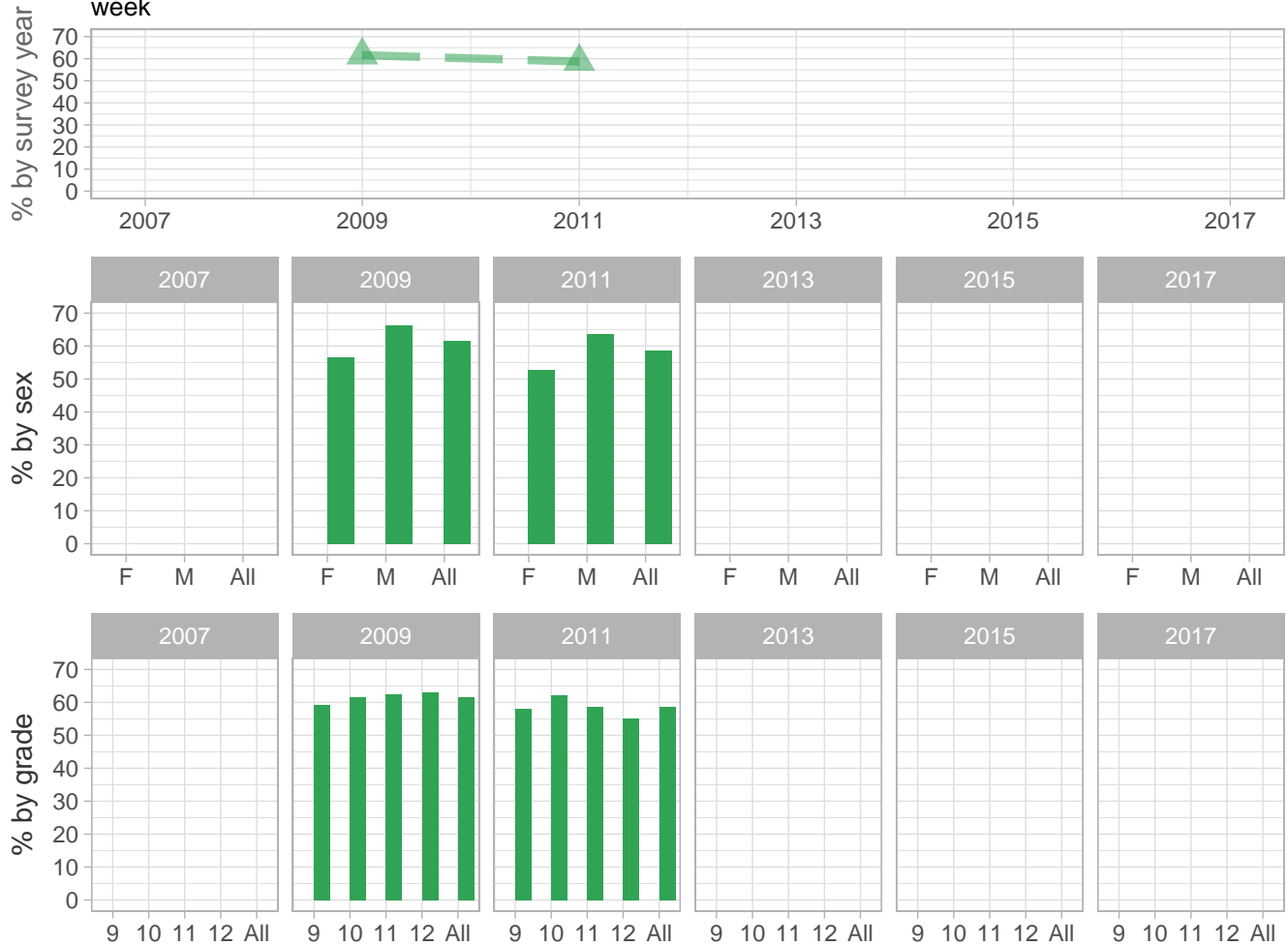
Number (n): Estimated number of students projected based on school enrollment data.

-: Data not available; *: Suppressed due to small cell sizes.

 School
  Region
  NH

Other Health Risks

Percent of students who did not participate any clubs or organizations (other than sports teams) outside of school (such as, 4-H, Boys and Girls Club, YMCA, or, church groups) during an average week



School-level by Sex and Grade

		2009(pct)	2011(pct)	2013(pct)	2015(pct)	2017(pct)	2017(n)
By sex	F	-	*	-	-	-	-
	M	-	*	-	-	-	-
By grade	9th	-	*	-	-	-	-
	10th	-	*	-	-	-	-
	11th	-	-	-	-	-	-
	12th	-	-	-	-	-	-
All	All	-	*	-	-	-	-

How the question was actually asked: During an average week when you are in school, in how many clubs or organizations outside of school (other than sports teams), such as 4-H, Boys and Girls Club, YMCA, or, church groups, do you participate?; a: 0 activities; b: 1 activity; c: 2 or 3 activities; d: 4 or more activities;

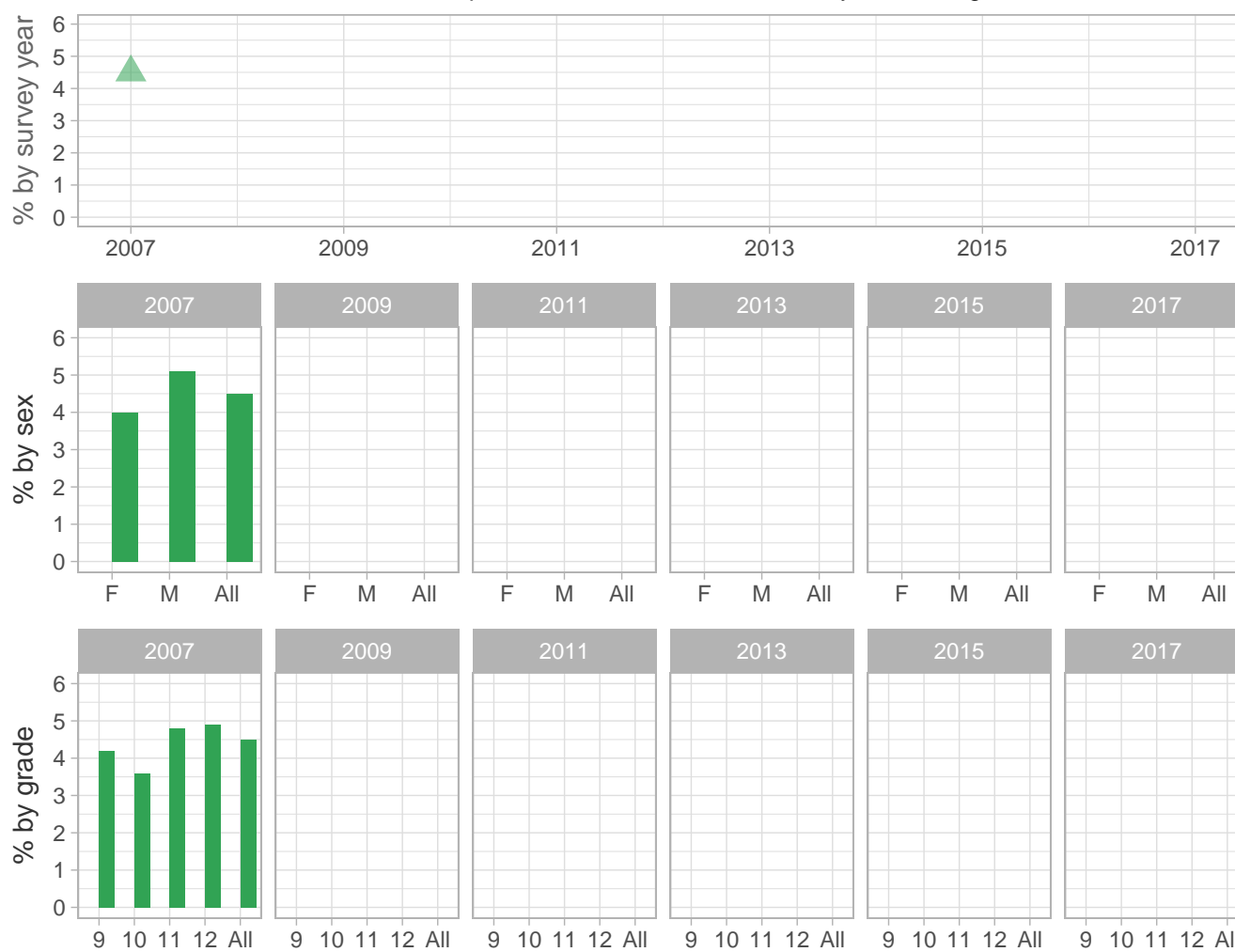
Percent (pct): numerator: a; denominator: abcd; qid: 116; 2007q999; 2009q79; 2011q80; 2013q999; 2015q999; 2017q999; Number (n): Estimated number of students projected based on school enrollment data.

-: Data not available; *: Suppressed due to small cell sizes.

 School
  Region
  NH

Other Health Risks

Percent of students who never had parent talk to them about how they were doing in school



School-level by Sex and Grade

		2009(pct)	2011(pct)	2013(pct)	2015(pct)	2017(pct)	2017(n)
By sex	F	-	-	-	-	-	-
	M	-	-	-	-	-	-
By grade	9th	-	-	-	-	-	-
	10th	-	-	-	-	-	-
	11th	-	-	-	-	-	-
	12th	-	-	-	-	-	-
All	All	-	-	-	-	-	-

How the question was actually asked: How often do your parents or other adults in your family talk with you about what you are doing in school?; a: Never; b: Rarely; c: Sometimes; d: Most of the time; e: Always;

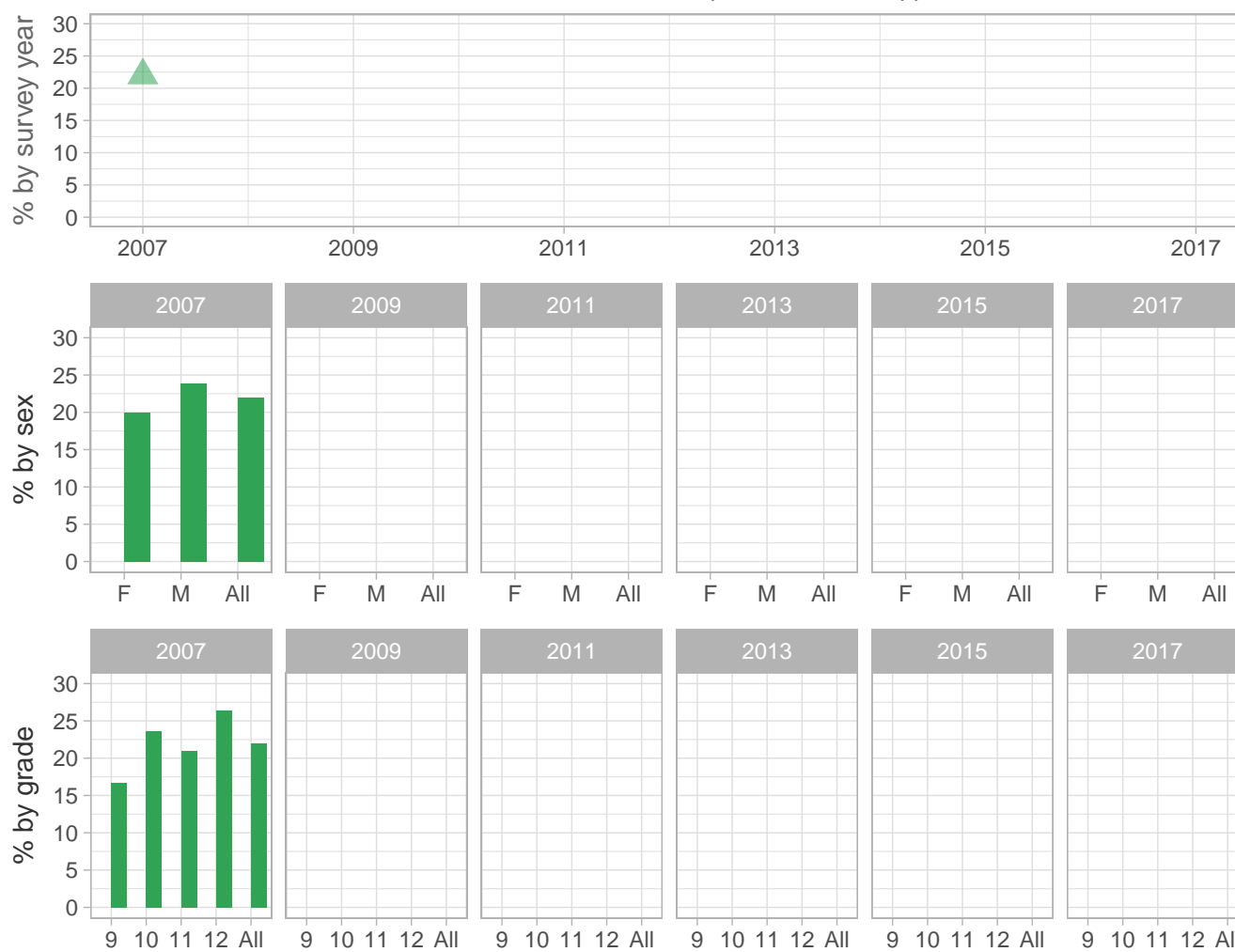
Percent (pct): numerator: a; denominator: abcde; qid: 74; 2007q74; 2009q999; 2011q999; 2013q999; 2015q999; 2017q999;
 Number (n): Estimated number of students projected based on school enrollment data.

-: Data not available; *: Suppressed due to small cell sizes.

 School
  Region
  NH

Other Health Risks

Percent of students who do not believe that students help decide what happens in their school



School-level by Sex and Grade

		2009(pct)	2011(pct)	2013(pct)	2015(pct)	2017(pct)	2017(n)
By sex	F	-	-	-	-	-	-
	M	-	-	-	-	-	-
By grade	9th	-	-	-	-	-	-
	10th	-	-	-	-	-	-
	11th	-	-	-	-	-	-
	12th	-	-	-	-	-	-
All	All	-	-	-	-	-	-

How the question was actually asked: Do you agree or disagree that students help decide what goes on in your school?; a: Strongly agree; b: Agree; c: Not sure; d: Disagree; e: Strongly disagree;

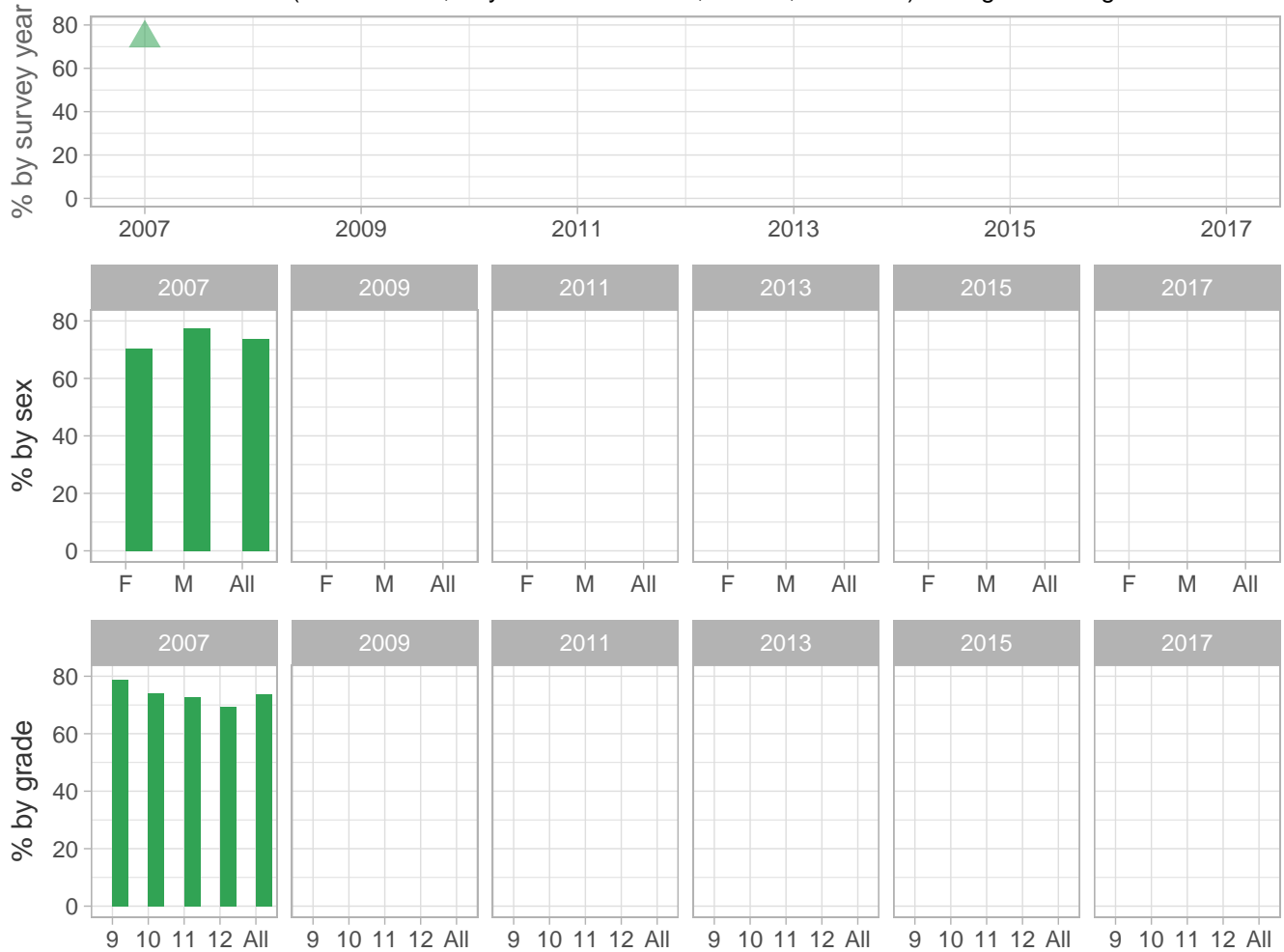
Percent (pct): numerator: de; denominator: abcde; qid: 75; 2007q75; 2009q999; 2011q999; 2013q999; 2015q999; 2017q999; Number (n): Estimated number of students projected based on school enrollment data.

-: Data not available; *: Suppressed due to small cell sizes.

 School
  Region
  NH

Other Health Risks

Percent of students who did not spend any hours in clubs or organizations (other than sports) outside of school (such as 4-H, Boys and Girls Clubs, YWCA, or YMCA) during an average week



School-level by Sex and Grade

		2009(pct)	2011(pct)	2013(pct)	2015(pct)	2017(pct)	2017(n)
By sex	F	-	-	-	-	-	-
	M	-	-	-	-	-	-
By grade	9th	-	-	-	-	-	-
	10th	-	-	-	-	-	-
	11th	-	-	-	-	-	-
	12th	-	-	-	-	-	-
All	All	-	-	-	-	-	-

How the question was actually asked: During an average week when you are in school, how many hours do you spend in clubs or organizations (other than sports) outside of school, such as 4-H, Boys and Girls Clubs, YWCA, or YMCA?; a: 0 hours; b: 1 to 4 hours; c: 5 to 8 hours; d: 9 to 12 hours; e: 13 to 20 hours; f: 21 or more hours;

Percent (pct): numerator: a; denominator: abcdef; qid: 77; 2007q77; 2009q999; 2011q999; 2013q999; 2015q999; 2017q999; Number (n): Estimated number of students projected based on school enrollment data.

-: Data not available; *: Suppressed due to small cell sizes.

 School
  Region
  NH

Other Health Risks

Percent of students who definitely will NOT complete a post highschool program (such as a vocational training program, military service, community college, or 4-year college)



School-level by Sex and Grade

		2009(pct)	2011(pct)	2013(pct)	2015(pct)	2017(pct)	2017(n)
By sex	F	-	-	-	-	-	-
	M	-	-	-	-	-	-
By grade	9th	-	-	-	-	-	-
	10th	-	-	-	-	-	-
	11th	-	-	-	-	-	-
	12th	-	-	-	-	-	-
All	All	-	-	-	-	-	-

How the question was actually asked: How likely is it that you will complete a post high school program such as a vocational training program, military service, community college, or 4-year college?; a: Definitely will not; b: Probably will not; c: Probably will; d: Definitely will; e: Not sure;

Percent (pct): numerator: a; denominator: abcde; qid: 79; 2007q79; 2009q999; 2011q999; 2013q999; 2015q999; 2017q999; Number (n): Estimated number of students projected based on school enrollment data.

-: Data not available; *: Suppressed due to small cell sizes.